



**HILL
STUDIO**

Landscape Architecture
Architecture
Community Planning
Historic Preservation

120 W. Campbell Ave. SW
Roanoke, VA 24011
(540) 342-5263
www.hillstudio.com

**NARROWS
DOWNTOWN
FACADES**

OUTFITTERS BUILDING

Project Status



**ELECTRICAL
POWER PLAN**

AUG 19, 2022

Revisions:
▲ MONTH, DAY, YEAR
▲ AUG 19, 2022

Drawn By: WBB
Review By: WBB
Project No. Project Number

Sheet No.

E101

CARBO, INC.
ENGINEERING SERVICES
P.O. BOX 188
ROCKY MOUNT, VA 24151
PH 540-853-4213 FAX 540-853-0398
CARBOINC@GMAIL.COM

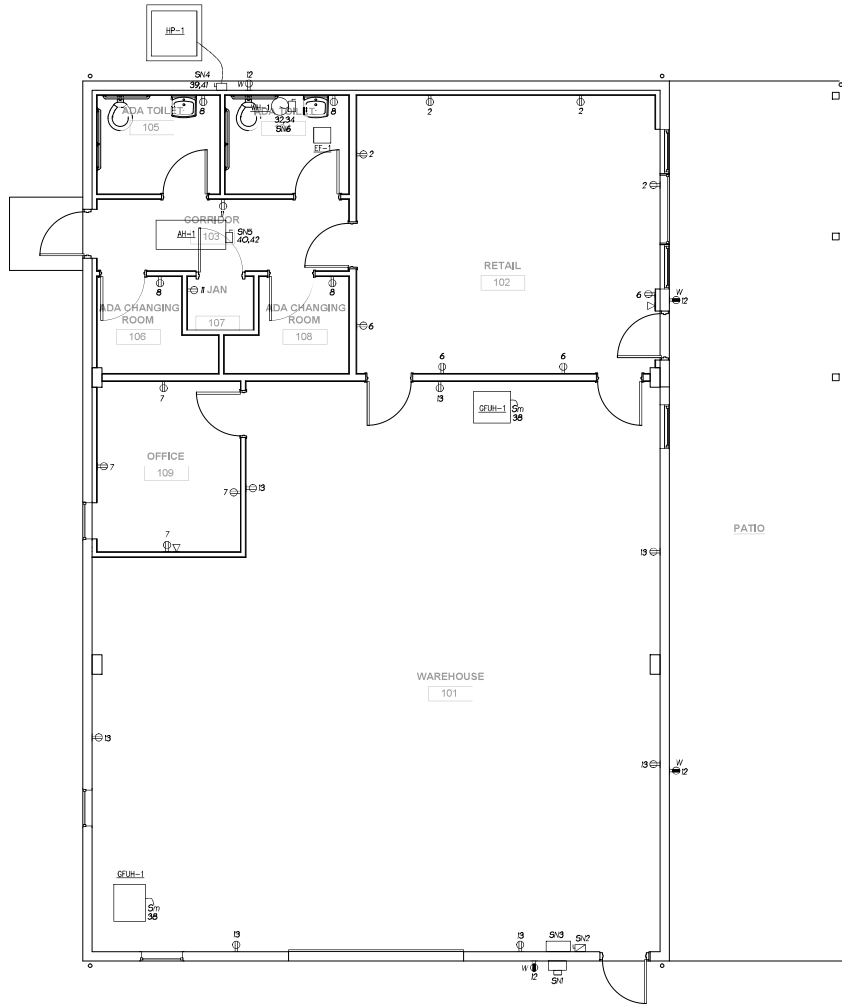


SHEET NOTES:

- SN1 - EXISTING UTILITY METER TO REMAIN.
- SN2 - EXISTING 200A 120/240V-3Ø-4W FUSED SERVICE DISCONNECT SWITCH TO BE RELOCATED.
- SN3 - EXISTING 200A MLO 120/240V-3Ø-4W 42 POLE PANELBOARD TO BE RELOCATED.
- SN4 - PROVIDE A 30A/2P NON FUSED GENERAL DUTY DISCONNECT SWITCH FOR HEAT PUMP HP-1. LABEL COVER WITH CIRCUIT ID. MOUNT WITH BOTTOM AT 9'-1" AFG.
- SN5 - PROVIDE A 60A/2P NON FUSED GENERAL DUTY DISCONNECT SWITCH FOR HEAT PUMP AH-1. LABEL COVER WITH CIRCUIT ID.
- SN6 - PROVIDE A 30A/2P NON FUSED GENERAL DUTY DISCONNECT SWITCH FOR WATER HEATER WH-1. LABEL COVER WITH CIRCUIT ID.

DEVICE & SYMBOL LEGEND

- SYMBOLS SHOWN ARE STANDARD SYMBOLS, SOME MAY NOT BE USED ON THIS PROJECT.
- 20 Ⓜ A FLUSH MOUNTED DUPLEX 20A RECEPTACLE, NEMA 5-20P SPEC GRADE (UNLESS NOTED OTHERWISE) MOUNT AT 18".
 - A INDICATES MOUNTING HEIGHT TO BE 6" ABOVE COUNTER TOP OR BACKSPLASH.
 - B INDICATES MOUNTING HEIGHT TO BE BELOW COUNTER TOP (VERIFY).
 - 20 INDICATES DEVICE IS TO BE ON PANEL, CIRC. NO. 20. TYPICAL AT ALL DEVICES AND SWITCHES.
 - Ⓜ FLUSH MOUNTED DUPLEX 20A 6PT RECEPTACLE, NEMA 5-20P SPEC GRADE MOUNT AT 18" AFF UNO.
 - S FLUSH MOUNTED SINGLE POLE 20A SWITCH SPEC GRADE FLUSH MOUNT AT 48" AFF.
 - 5b FLUSH MOUNTED THREE-WAY 20A SWITCH SPEC GRADE FLUSH MOUNT AT 48" AFF.
 - 5c FLUSH MOUNTED FOUR-WAY 20A SWITCH SPEC GRADE FLUSH MOUNT AT 48" AFF.
 - 5d FLUSH MOUNTED 0-1V LED DIMMER SWITCH FLUSH MOUNT AT 48" AFF.
 - 5e FLUSH MOUNTED DUAL TECH OCCUPANCY SWITCH SET OFF DELAY TO 20 MIN. FLUSH MOUNT AT 48" AFF.
 - 5m TWO POLE MOTOR RATED SWITCH, SQUARE D KG OR EQUAL. MOUNT ON OR ADJACENT TO MECHANICAL UNIT. LABEL COVER WITH CIRCUIT ID.
 - Ⓜ CEILING MOUNTED JUNCTION BOX
 - Ⓜ WALL MOUNTED JUNCTION BOX
 - Ⓜ FUSED SAFETY SWITCH (SIZE AS NOTED)
 - Ⓜ NON-FUSED SAFETY SWITCH (SIZE AS NOTED)
 - ↪ ARROW INDICATES HOME RUN CIRCUIT TO PANEL INDICATED (IE, PANEL, CIRC. BKR. 31, 20A CIRCUIT, 2x2, NUG TYPICAL UNLESS NOTED OTHERWISE).
 - Ⓜ FLUSH MOUNTED DATA/VOICE OUTLET - SINGLE GANG PLASTER RING, 4" SQ. BOX 2 1/8" D WITH 3/4" EMPTY CONDUIT TO ABOVE CEILING FOR OWNERS DATA/TELECO WIRING. PROVIDE BLANK COVER.



1 POWER PLAN
1/4" = 1'-0"

G
F
E
D
C
B
A

3 2 1